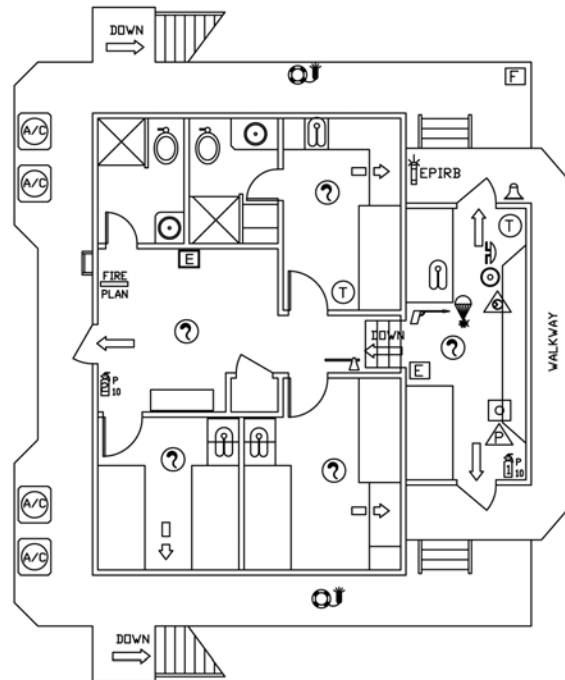
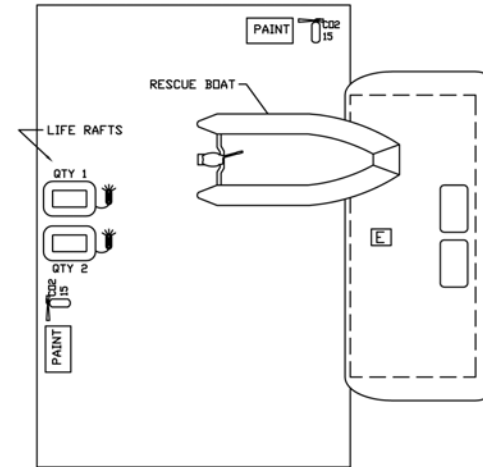


GENERAL ARRANGEMENT 01 LEVEL



GENERAL ARRANGEMENT 02 LEVEL



GENERAL ARRANGEMENT 03 LEVEL

SYMBOL	SYMBOL DESCRIPTION
	FDG BELL
	PFD - LIFE JACKET W/ LIGHT & WHISTLE
	EMG POS INDICATING RADIO BEACON (E.P.I.R.B.)
	LIFE RING AND LIGHT
	LIFE RING W/ 100 FT. LINE
	12-MAN LIFE FLOAT W/ LIGHT
	PORTABLE FIRE EXTINGUISHER, 15# CO2
	PORTABLE FIRE EXTINGUISHER, 10# POWDER
	PORTABLE FIRE EXTINGUISHER, 5# POWDER
	AUX. CONTROL STATION
	EMERGENCY VENTILATION SHUTDOWN
	EMERGENCY FUEL / FUEL PUMP SHUTDOWN

SYMBOL	SYMBOL DESCRIPTION
	EMERGENCY RANGE DISCONNECT (MANUAL)
	EMERGENCY DEEP FRYER DISCONNECT (MANUAL)
	STRETCHER
	ROCKET PARACHUTE FLARES
	FIRE AXE W/ BRACKET
	FIRE STATION WITH 50' HOSE
	EMERGENCY LIGHT
	LINE THROWING APPARATUS
	RESCUE BOAT W/ 25 HP OUTBOARD MOTOR
	FIRST AID KIT
	SMOKE DETECTOR, BATTERY OPERATED
	HEAT DETECTOR

SYMBOL	SYMBOL DESCRIPTION
	FIRE ALARM PANEL
	GENERAL ALARM ACTUATOR SWITCH
	GENERAL ALARM BELL
	PRIMARY ESCAPE ROUTE
	SECONDARY ESCAPE ROUTE
	EMBARKATION LADDER
	FIRE PUMP
	PERSONNEL NET
	FIRE AND SAFETY PLAN / STATION BILL (POSTED)
	VENTILATION DAMPER, MANUAL
	TILT ALARM AUDIBLE HORN
	OVERBOARD PUMP START / STOP

REVISIONS	
DYNAMICS MARINE, INC. 225 MONSANTO ST., LULING, LA. 70070 504-785-2118	
MARINE INDUSTRIAL FABRICATORS, INC.	
OFFSHORE MARINE CONTRACTORS, LLC CLASS 175 LIFTBOAT FIRE / SAFETY PLAN 01, 02, AND 03 DECKS	
DATE: 12/17/09	APPV:
BY: EGM	NO: GA-04